

IDEAL BURUNDI

The humanitarian situation in Burundi continues to deteriorate, ...



... and two thirds of citizens do not feel safe to publicly express political opinions.



The persistent fear and violence is eroding trust between citizens and their government.



The lack of inclusivity in local decision making ...

... means local governments struggle to identify adequate solutions for local conflict ...



... and fail to provide a safe and secure environment for its citizens.

As a result, Burundians live amidst an escalating spiral of conflict, putting human security further at risk .



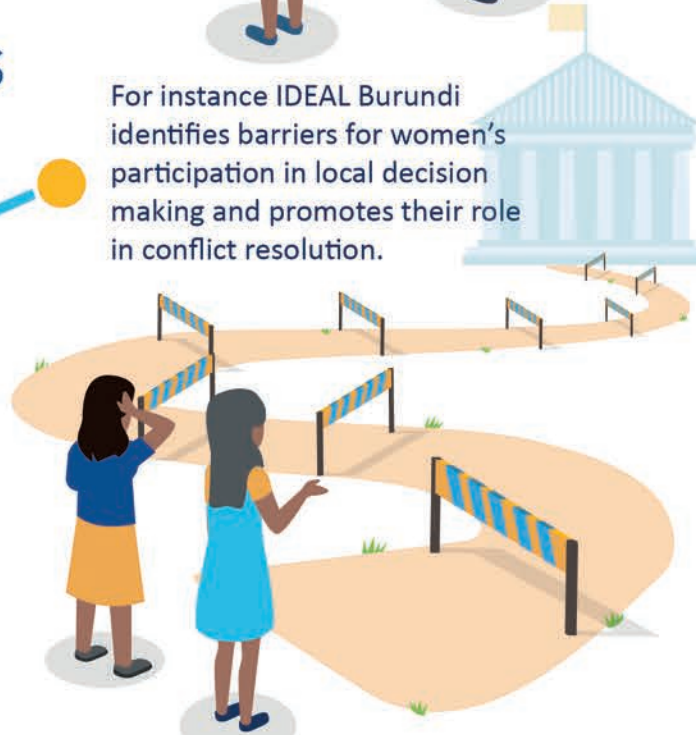
This is where the IDEAL programme comes in:

IDEAL INCLUSIVE DECISIONS AT LOCAL LEVEL

We assist eight local governments ...



For instance IDEAL Burundi identifies barriers for women's participation in local decision making and promotes their role in conflict resolution.



... to enable them to actively involve all citizens in decision-making processes on a local level and improve human security in communities.